



What's Pumping in Pediatric Heart Transplant Research?

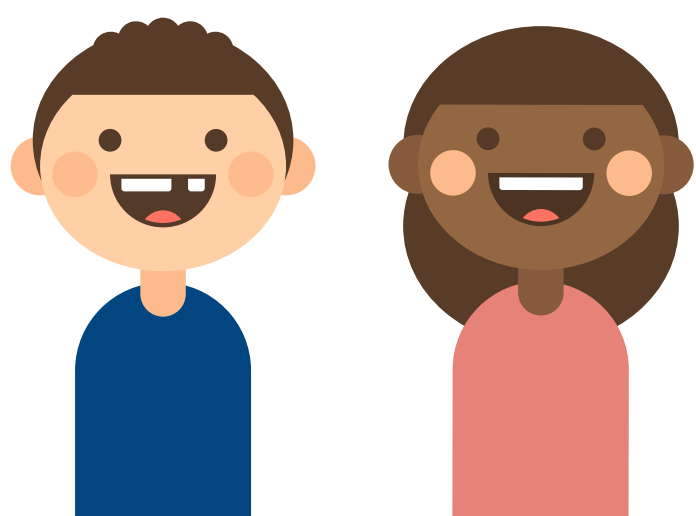
Summary of the following recently published article from PHTS

Education Placement in Pediatric Heart Transplant Patients

Micah S. Brosbe, PhD | Lydia K. Wright, MD | Ryan Cantor, PhD | William J. Dreyer, MD | Sonya Kirmani, MD | Margaret Knight, MSN, CPNP | Stephanie J. Nakano, MD | Steven J. Kindel, MD | Thomas D. Ryan, MD, PhD | James K. Kirklin, MD | Shriprasad R. Deshpande, MD

Previous research has shown that children with heart disease may be at higher risk for delays in their development. PHTS was interested in studying this in children following heart transplant.

Who did we look at?



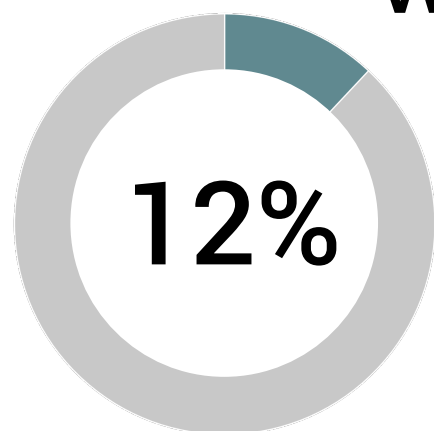
1495 US Heart Transplant Patients
Ages 6 -18



Grouped by Education Placement

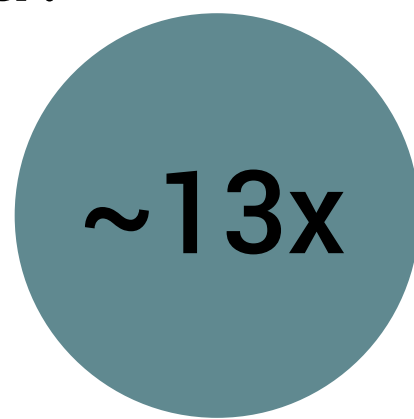
- Standard: At grade level without special education.
- Modified: Below grade level/receiving special education services.

What was found?



12% of children (at listing and after transplant) were in Modified Education.

This is ↑ than the general population.



A child in Modified Education at listing was 12.9 times more likely to be in Modified Education 3yrs after transplant.

Factors associated with needing Modified Education programs at time of listing

- Boys > Girls
- Congenital Heart Disease (CHD)
- Government insurance
- Longer hospital stay before transplant



Who was more likely to need Modified Education after transplant?

- Congenital Heart Disease (CHD)
- Government insurance
- Infections after transplant

What wasn't associated with Modified Education after transplant?

- Age
- Race
- Use of ECMO or VAD
- Waitlist Time
- Sickness at time of transplant

Summary:

Some children, both before and after transplant, may have learning issues as suggested by the need for modified education. Understanding the factors associated with need for modified education, dedicating resources as well as creating targeted, early interventions will be essential to maximize their potential!

For more information refer to the original article:

Brosbe, MS, Wright, LK, Cantor, R, et al. Educational and learning morbidity in pediatric heart transplant recipients: A pediatric heart transplant society study. *Pediatr Transplant*. 2020; 24:e13711. <https://doi.org/10.1111/petr.13711>