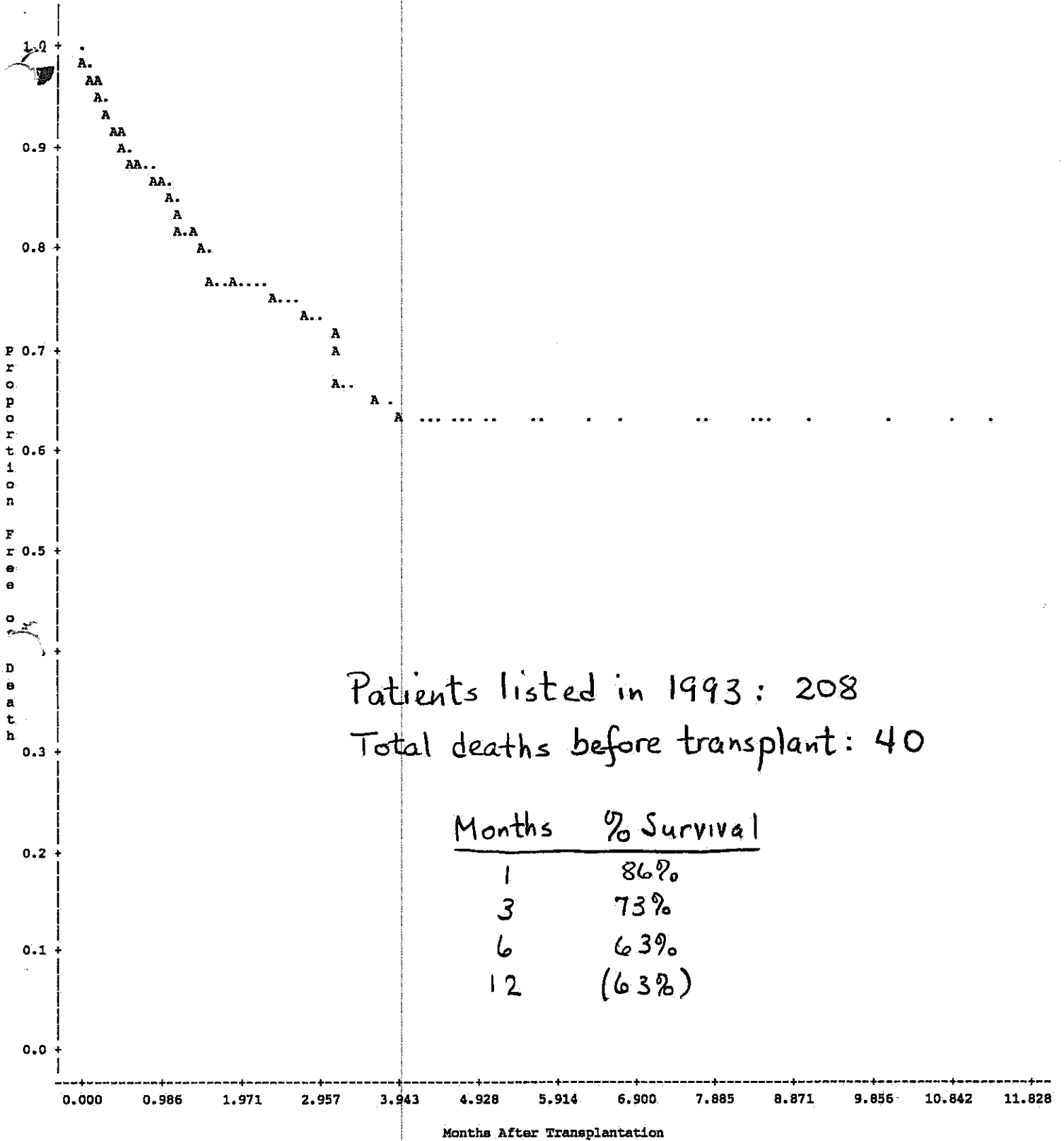


26/1/94

Plot of CUM_SURV*LINTDEAD. Symbol is value of PLOTCHAR.



Patients listed in 1993: 208
 Total deaths before transplant: 40

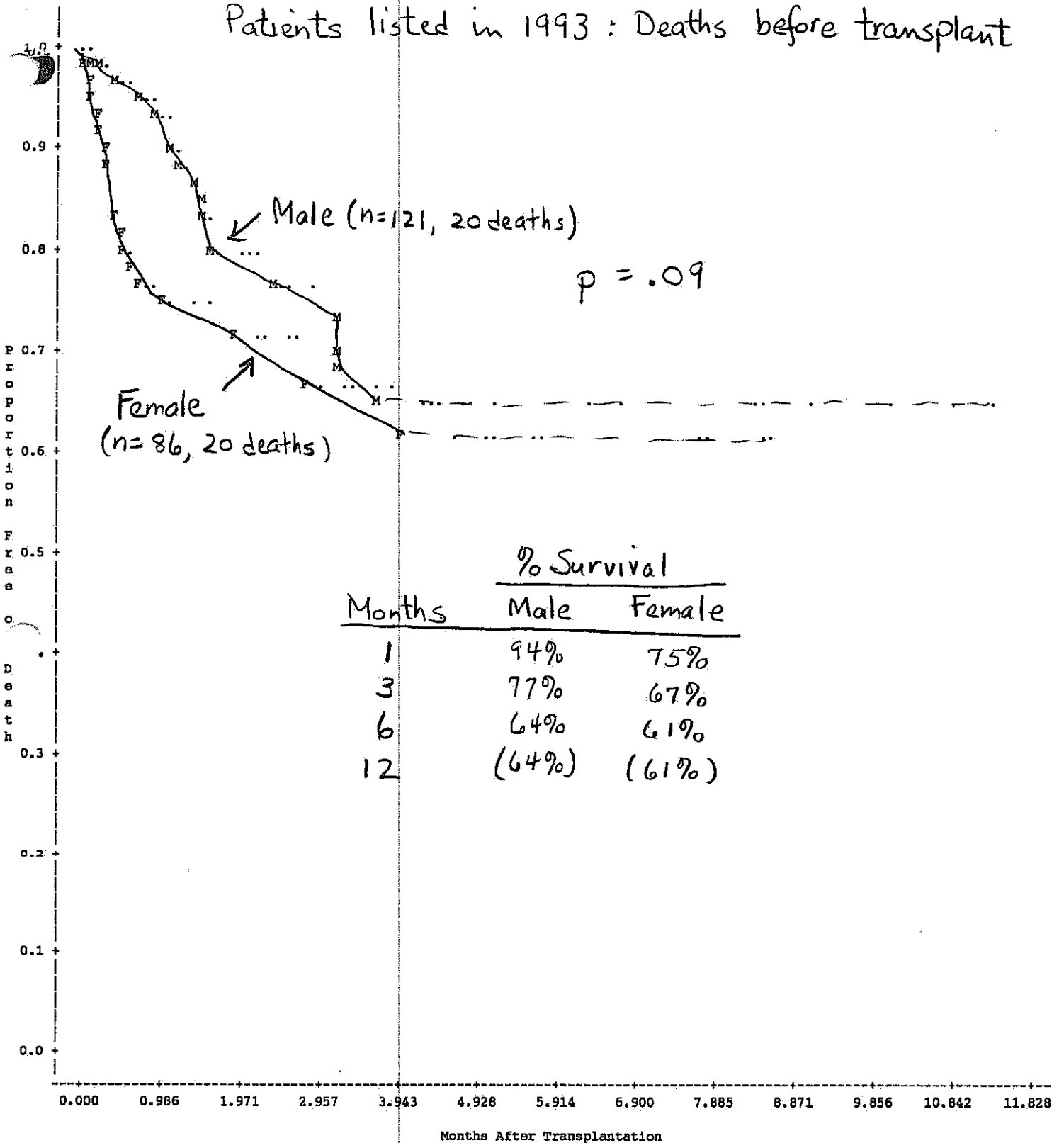
Months	% Survival
1	86%
3	73%
6	63%
12	(63%)

NOTE: 31 obs hidden.

Death after listing - Censored at transplant

Plot of CUM SURV*LISTDEAD. Symbol is value of PLOTCHAR.

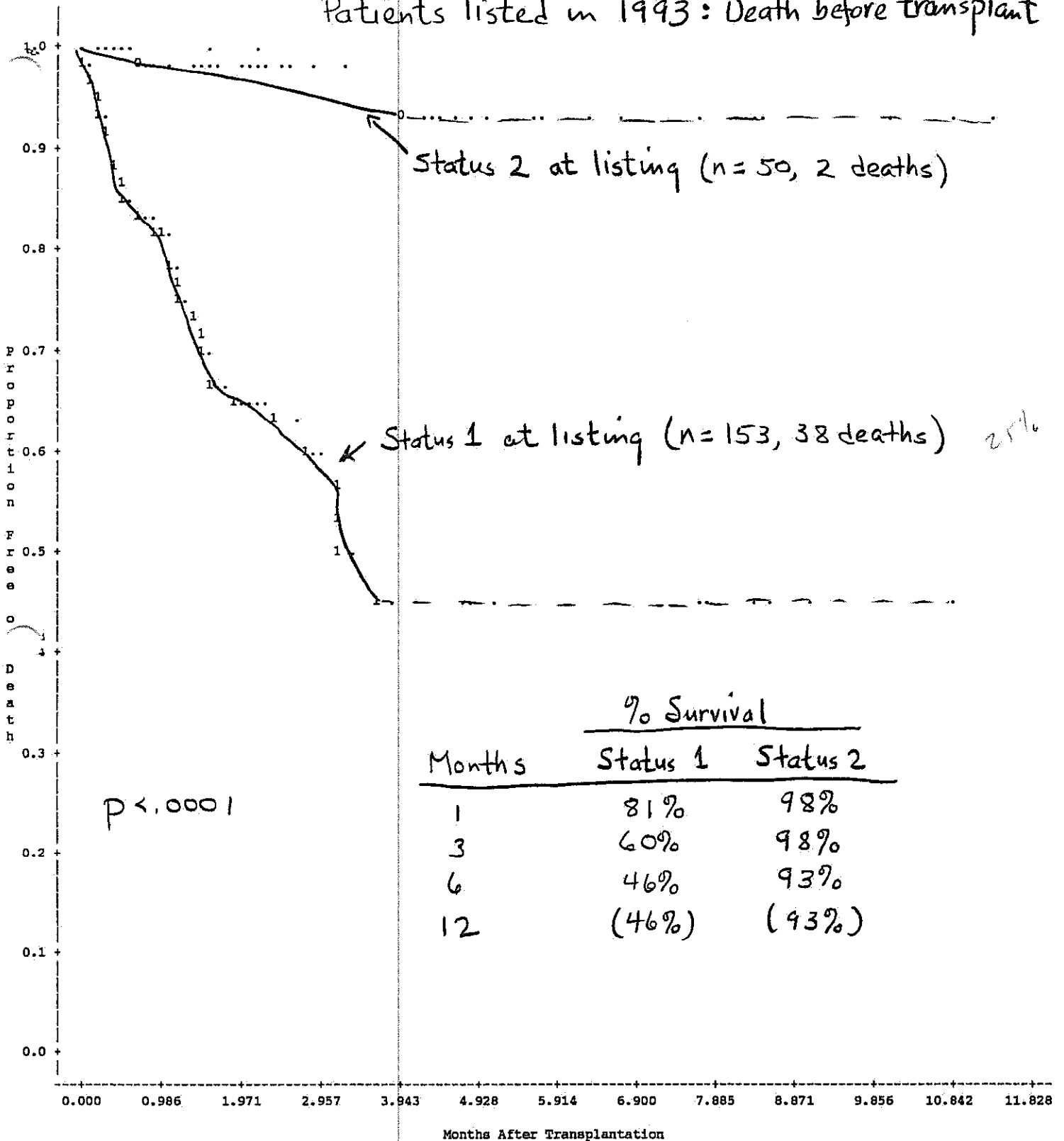
Patients listed in 1993 : Deaths before transplant



NOTE: 34 obs hidden.

Plot of CUM SURV*LINE*DEAD. Symbol is value of PLOTCHAR.

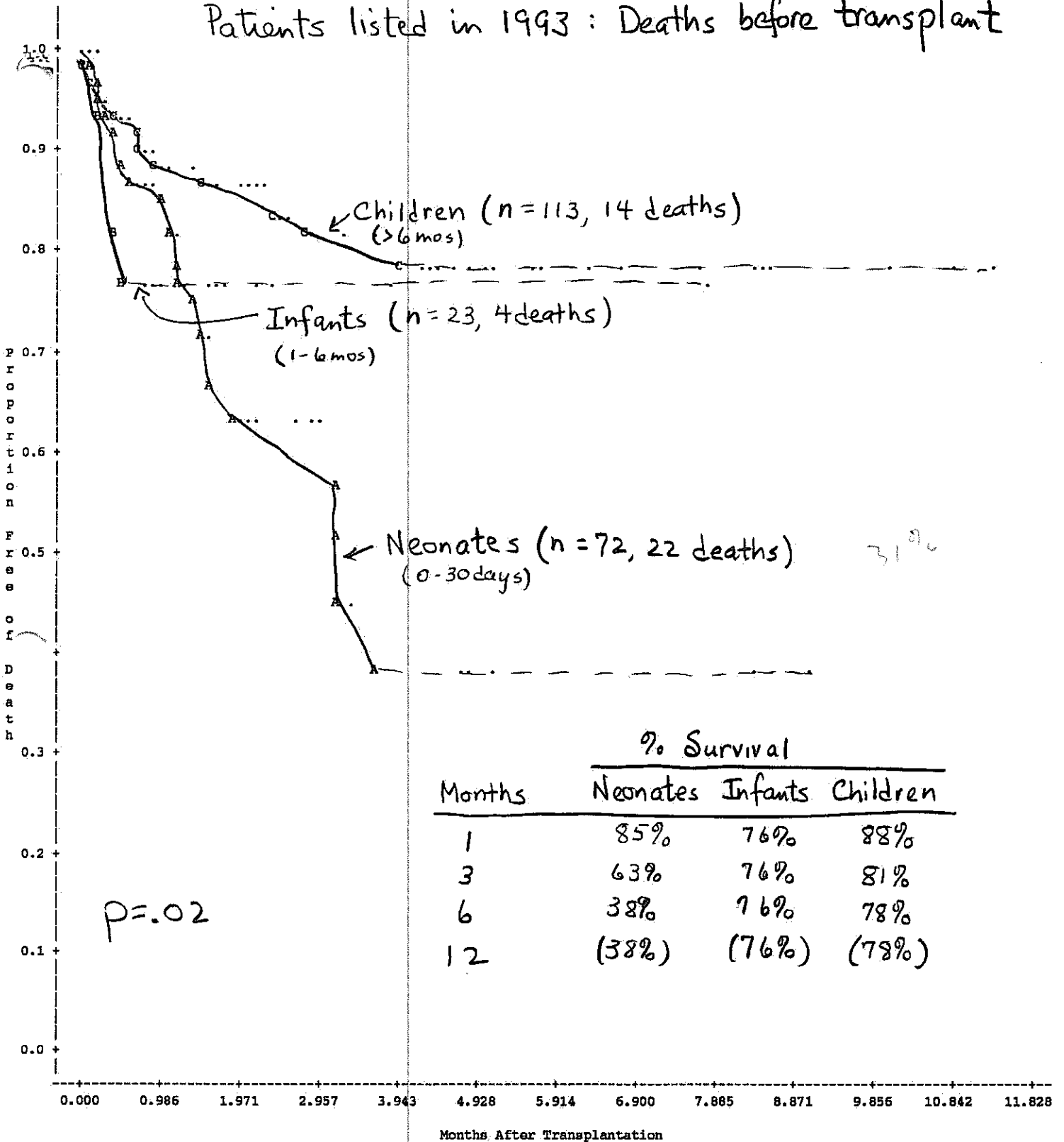
Patients listed in 1993: Death before transplant



NOTE: 30 obs hidden.

Plot of CUM_SURV*LINDEAD. Symbol is value of PLOTCHAR.

Patients listed in 1993: Deaths before transplant



NOTE: 34 obs hidden.